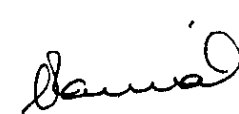


SERVITUDE DIAGRAM

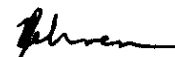
SIDES Metres		ANGLES OF DIRECTION	CO-ORDINATES Y System WG 31° X			S.G. No.
<u>SERVITUDE</u>		Constants <u>DATA</u>		± 0.00	+3100 000.00	2794/2006
AB	8.75	313 10 40	A	+73 914.46	+ 18 303.43	Approved  for Surveyor-General 2006-11-23
BC	34.76	41 24 50	B	+73 908.08	+ 18 309.42	
CD	118.54	45 17 00	C	+73 931.07	+ 18 335.49	
DE	5.01	139 33 10	D	+74 015.30	+ 18 418.89	
EF	117.73	225 17 00	E	+74 018.56	+ 18 415.08	
FA	35.33	215 21 20	F	+73 934.90	+ 18 332.24	
<u>CONNECTING</u>		<u>DATA</u>				
AQ	51.04	133 10 40	Q	+73 951.68	+ 18 268.50	
BR	128.91	313 10 40	R	+73 814.07	+ 18 397.62	
DS	107.90	319 33 10	S	+73 945.30	+ 18 501.01	
ET	71.06	139 33 10	T	+74 064.66	+ 18 361.01	
<u>SERVITUDE</u>		<u>DATA</u>				
GH	6.08	313 10 40	G	+73 874.59	+ 18 340.84	
HJ	17.01	92 03 20	H	+73 870.15	+ 18 345.00	
JK	28.25	42 03 20	J	+73 887.15	+ 18 344.39	
KL	117.87	50 35 30	K	+73 906.07	+ 18 365.37	
LM	4.00	139 33 10	L	+73 997.14	+ 18 440.20	
MN	117.64	230 35 30	M	+73 999.74	+ 18 437.15	
NP	29.82	222 03 20	N	+73 908.85	+ 18 362.47	
PG	14.29	272 03 20	P	+73 888.87	+ 18 340.33	
<u>CONNECTING</u>		<u>DATA</u>				
GQ	105.72	133 10 40				
HR	76.91	313 10 40				
LS	79.91	319 33 10				
MT	100.06	139 33 10				
		D/S2830 TR280	△	+73 434.17	+ 21 092.02	
		D/S2830 TR284	△	+77 965.44	+ 23 479.94	

1. The figure A B C D E F represents a Railway Servitude.
2. The figure G H J K L M N P represents a Sewer Servitude 4,00 metres wide both over

Erf 3280 Dundee (Extension No 15)

Situate in the Endumeni Municipality Registration Division GT
Province of KwaZulu Natal

Surveyed in July 2006 by me


NR Gehren (PLS 1032)
Professional Land Surveyor

This diagram relates to	The original diagram is	File No. : /80
No.	^{GP} S.G. No. 4215/1983 ^	S.R. No. : 974/2006
Registrar of Deeds	Transfer No. T15083/1984	Comp. : GTNG - 333



S.G. No.

2794/2006

Approved

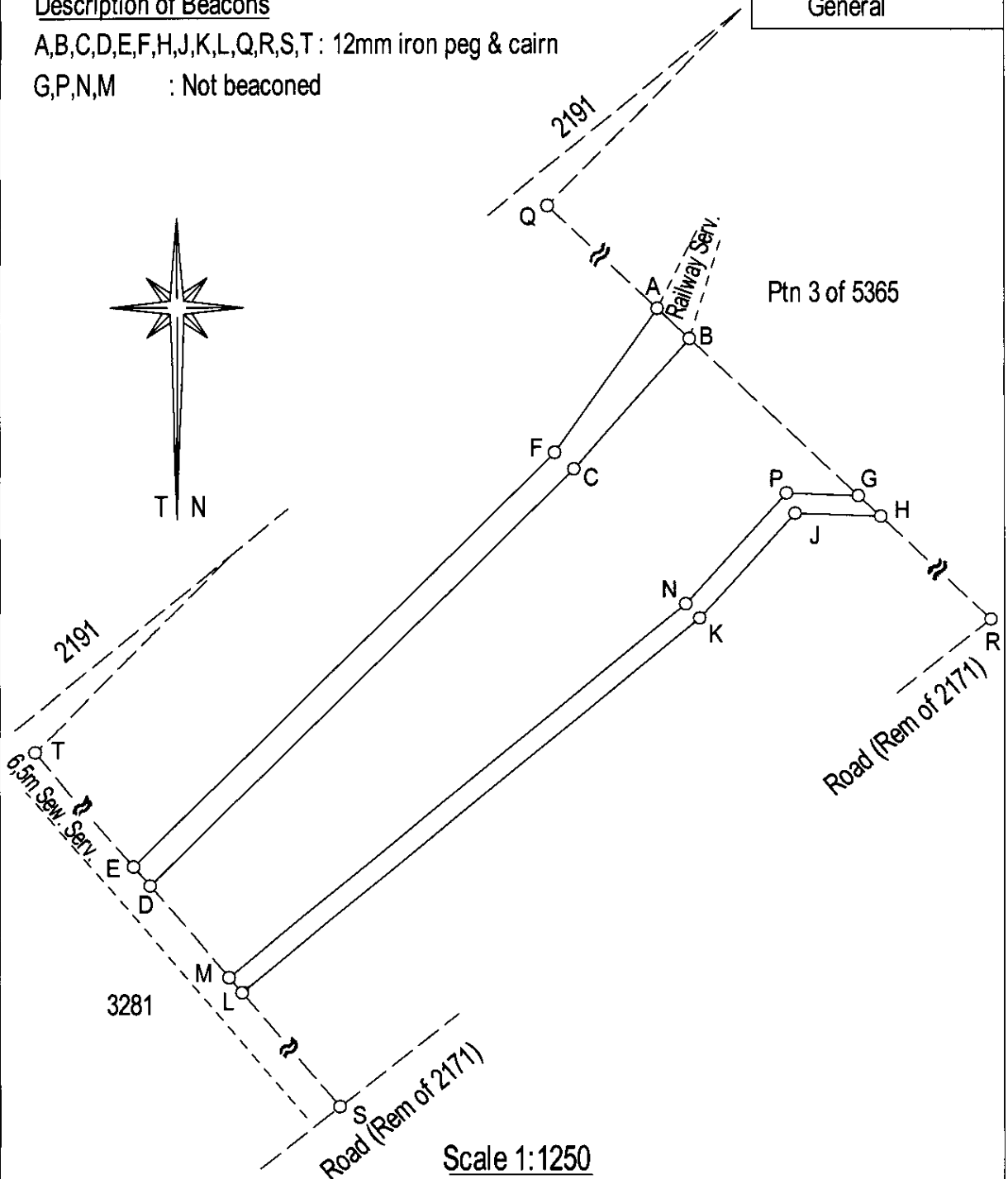
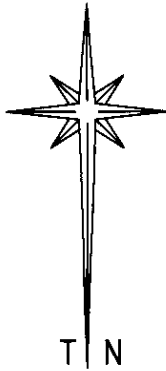
2006-11-23

for Surveyor-General

Description of Beacons

A,B,C,D,E,F,H,J,K,L,Q,R,S,T : 12mm iron peg & cairn


G,P,N,M : Not beaconed



Surveyed in July 2006 by me

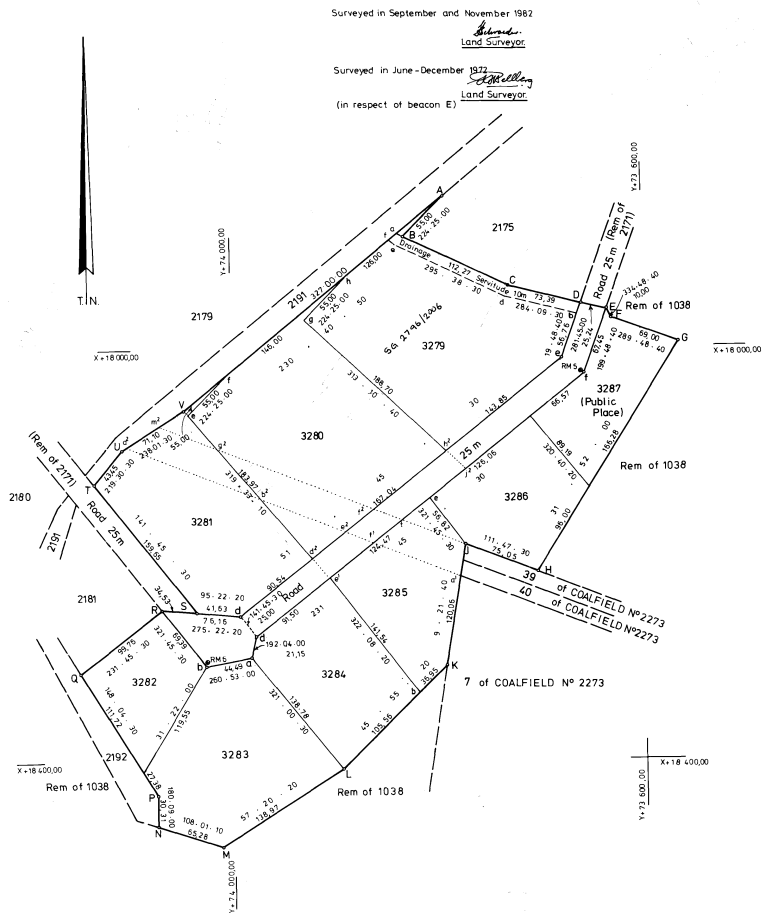
NR Gehren (PLS 1032)
Professional Land Surveyor

AMENDING GENERAL PLAN

showing
 Lots 3279-3286, and 3287 (Public Place), Dundee (Extension No 15) & Road,
 Being a relayout of Lots 2176-2178, 2182-2189
 and 2193 (Public Place) and Road
 Reg. Div. 

as appear on General Plan S.G.N°1022/1973.
 Situate in the Borough of Dundee,
 County of Kip River, Province of Natal.

SCALE 1:2000



CO-ORDINATES				AREAS			
Constants Y+0,00		X+ 3100 000,00	System Le 31°	Lot	square metres		
MAIN FIGURE		BLOCK CORNERS					
A	+73 792,72	+17 852,14	3279e	+73 678,08	+18 011,35	3279	3,0556 ha
B	+73 831,21	+17 891,42	3281d	+73 993,38	+18 259,82	3280	2,9888 ha
C	+73 730,00	+17 940,00	3282b	+74 026,25	+18 307,19	3281	2,2352 ha
D	+73 658,84	+17 957,95	3283a	+73 982,32	+18 300,14	3282	9,427 ha
E	+73 624,13	+17 963,09	3284d	+73 977,90	+18 279,46	3283	2,0930 ha
F	+73 629,87	+17 972,14	3287f	+73 656,98	+18 026,55	3284	1,5534 ha
G	+73 564,95	+17 995,52				3285	1,3893 ha
H	+73 703,42	+18 218,27				3286	1,2797 ha
J	+73 773,10	+18 190,41					
K	+73 792,63	+18 308,87					
L	+73 895,00	+18 408,00					
M	+74 012,00	+18 483,00	RM5	+73 658,40	+18 025,63	3287	1,0426 ha
N	+74 074,08	+18 462,81	RM6	+74 025,79	+18 305,60		
P	+74 074,00	+18 432,50					
Q	+74 147,58	+18 314,44					
R	+74 069,20	+18 252,69					
S	+74 034,82	+18 255,92					
T	+74 133,84	+18 130,93					
U	+74 106,00	+18 087,00					
V	+74 045,69	+18 059,35					
REFERENCE MARKS				Public Place			
TRIG BEACONS							
(287) +72 059,44				+16 552,32			
Queen Mary							
(280) +73 411,14				+20 794,80			
Doctor							

DESCRIPTION OF BEACONS

A, B, C, D, E, F, G, H, J, M, N, P, Q, R, S, T, U, V, 3279e, 3281d, 3282b, 3283a, 3284d, 3287f: 12 mm pegs.
 K: 12mm peg 0,7m north of tubular post.
 L: 12mm peg 0,74m west of tubular post.
 RM5, RM6: 20mm pegs in concrete 0,3m below surface.

SERVITUDE NOTE

The Figure d CD Side represents a Drainage Servitude 10m wide over Lot 3279

S.G. N° 4215/1983
 Approved
H. H. Dieb.
 Surveyor - General.
 1984. 02. 27.

File DUNDEE / 80 (EXT N° 15)
 S.R. N° 1567 / 1983
 Compilations GTNG - 333
 - 341