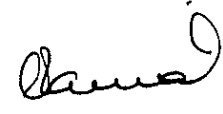
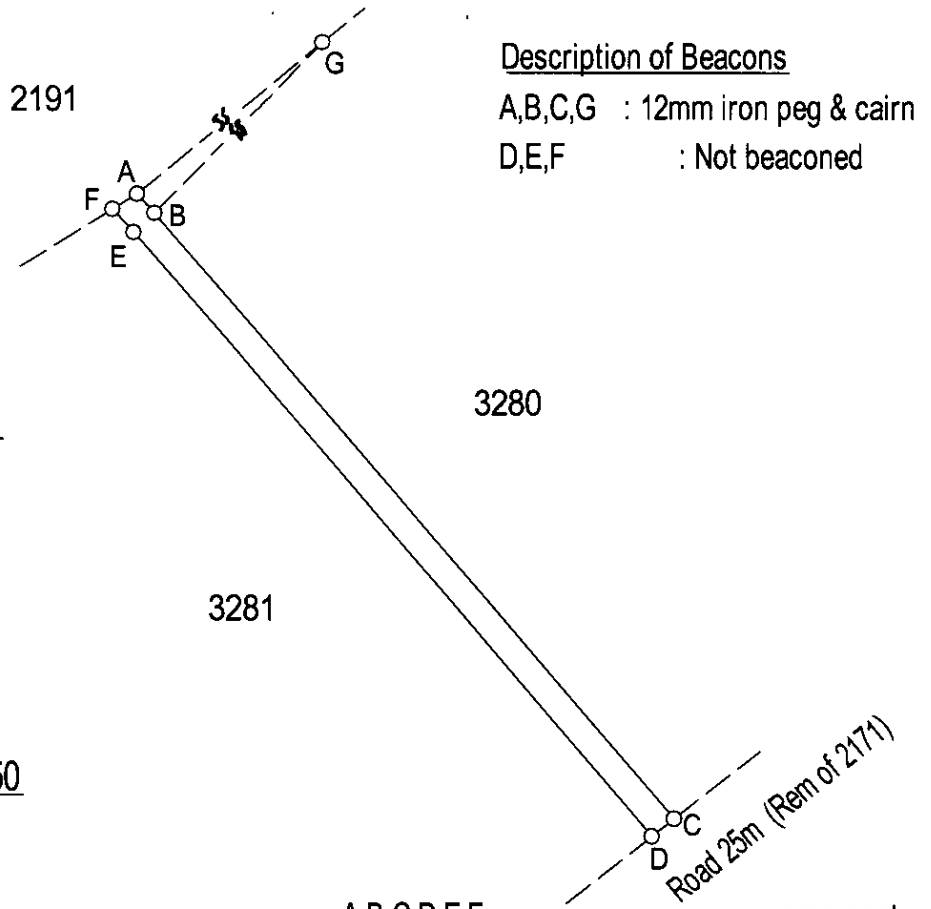


SERVITUDE DIAGRAM

SIDES Metres		ANGLES OF DIRECTION	CO-ORDINATES Y System WG 31° X			S.G. No.
		Constants		± 0.00	+3100 000.00	2795/2006
<u>SERVITUDE</u>		<u>DATA</u>				Approved
AB	6.01	317 29 40	A	+74 068.72	+ 18 356.58	 for Surveyor- General
BC	183.97	319 33 00	B	+74 064.66	+ 18 361.01	
CD	6.50	51 46 00	C	+73 945.30	+ 18 501.01	
DE	183.49	139 33 00	D	+73 950.41	+ 18 505.03	
EF	7.22	137 30 00	F	+74 069.45	+ 18 365.40	
FA	6.61	238 01 30	F	+74 074.32	+ 18 360.08	
<u>CONNECTING</u>		<u>DATA</u>				
AG	55.00	230 40 50	G	+74 026.17	+ 18 321.73	
		D/S2830 TR280	△	+73 434.17	+ 21 092.02	
		D/S2830 TR284	△	+77 965.44	+ 23 479.94	



The figure **A B C D E F** represents

a Sewer Servitude 6,5 metres wide over

ERF 3281 DUNDEE (Extension No 15)

Situate in the Endumeni Municipality Registration Division GT
Province of KwaZulu Natal


Surveyed in July 2006 by me


NR Gehren (PLS 1032)
Professional Land Surveyor

This diagram relates to	The original diagram is	File No. : /80
No.	GP SG No. 4215/1983 A	S.R. No. : 974/2006
Registrar of Deeds	Transfer No. T15083/1984	Comp. : GTNG - 333

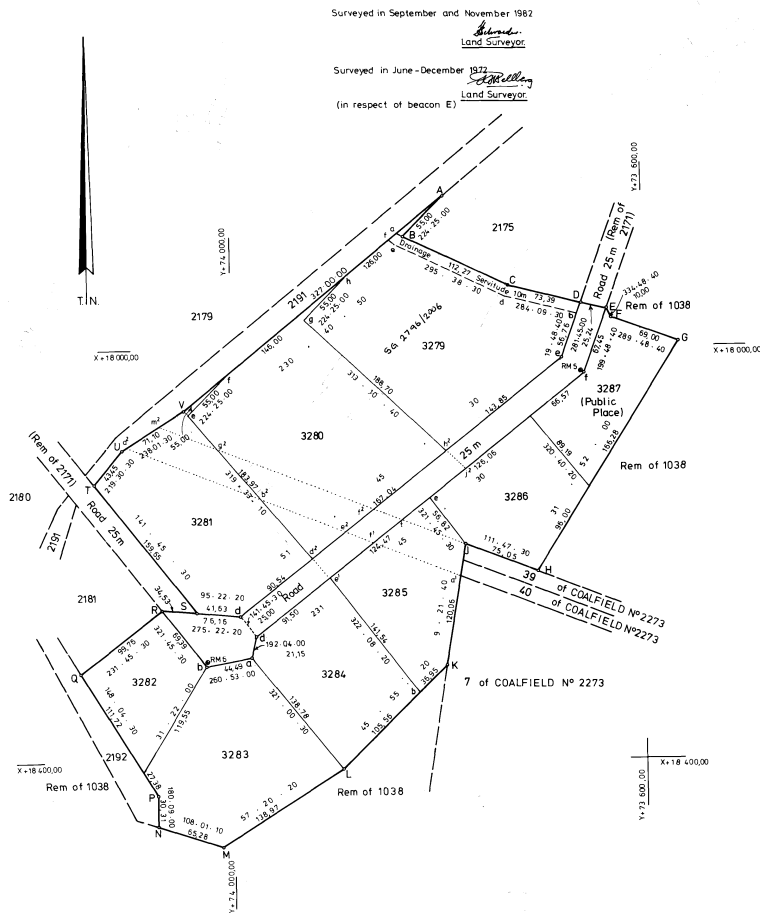
S

AMENDING GENERAL PLAN

showing
 Lots 3279-3286, and 3287 (Public Place), Dundee (Extension No 15) & Road,
 Being a relayout of Lots 2176-2178, 2182-2189
 and 2193 (Public Place) and Road
 Reg. Div. 

as appear on General Plan S.G.N°1022/1973.
 Situate in the Borough of Dundee,
 County of Kip River, Province of Natal.

SCALE 1:2000



Surveyed in September and November 1982

S. H. ...
 Land Surveyor

Surveyed in June-December 1977
 (in respect of beacon E)
S. H. ...
 Land Surveyor

CO-ORDINATES				AREAS			
Constants Y+0,00		X+ 3100 000,00	System Lo 31°	Lot	square metres		
MAIN FIGURE		BLOCK CORNERS					
A	+73 792,72	+17 852,14	3279e	+73 678,08	+18 011,35	3279	3,0556 ha
B	+73 831,21	+17 891,42	3281d	+73 993,38	+18 259,82	3280	2,9888 ha
C	+73 730,00	+17 940,00	3282b	+74 026,25	+18 307,19	3281	2,2352 ha
D	+73 658,84	+17 957,95	3283a	+73 982,32	+18 300,14	3282	9,427 ha
E	+73 624,13	+17 963,09	3284d	+73 977,90	+18 279,46	3283	2,0930 ha
F	+73 629,87	+17 972,14	3287f	+73 656,98	+18 026,55	3284	1,5534 ha
G	+73 564,95	+17 995,52				3285	1,3893 ha
H	+73 703,42	+18 218,27				3286	1,2797 ha
J	+73 773,10	+18 190,41					
K	+73 792,63	+18 308,87					
L	+73 895,00	+18 408,00					
M	+74 012,00	+18 483,00					
N	+74 074,08	+18 462,81	RM5	+73 658,40	+18 025,63	3287	1,0426 ha
P	+74 074,00	+18 432,50	RM6	+74 025,79	+18 305,60		
Q	+74 147,58	+18 314,44					
R	+74 069,20	+18 252,69					
S	+74 034,82	+18 255,92					
T	+74 133,84	+18 130,93					
U	+74 106,00	+18 087,00					
V	+74 045,69	+18 059,35					
				TRIG BEACONS			
				(287)	+72 059,44	+16 552,32	
				Queen Mary	(280)	+73 411,14	+20 794,80
				Doctor			

DESCRIPTION OF BEACONS

A, B, C, D, E, F, G, H, J, M, N, P, Q, R, S, T, U, V, 3279e, 3281d, 3282b, 3283a, 3284d, 3287f: 12 mm pegs.
 K: 12mm peg 0,7m north of tubular post.
 L: 12mm peg 0,74m west of tubular post.
 RM5, RM6: 20mm pegs in concrete 0,3m below surface.

SERVITUDE NOTE

The Figure d CD Side represents a Drainage Servitude 10m wide over Lot 3279

S.G. N° 4215/1983
 Approved
H. H. ...
 Surveyor - General.
 1984. 02. 27.

File DUNDEE / 80 (EXT N° 15)
 S.R. N° 1567 / 1983
 Compilations GTNG - 333
 - 341

Degree sheet 23