

SIDES Metres		ANGLES OF DIRECTION	CO-ORDINATES Y System WG31° X			S.G. No. <b>334/2020</b>
		Constants		0,00	+3200000,00	Approved <i>S. G. No. 334/2020</i>
AB	47,76	305 13 30	A	+ 65 710,82	+ 29 442,54	for : SURVEYOR- GENERAL <b>2020-10-26</b>
BC	36,69	227 19 50	B	+ 65 671,81	+ 29 470,09	
CD	253,41	228 16 20	C	+ 65 644,83	+ 29 445,22	
DE	33,71	230 27 50	D	+ 65 455,71	+ 29 276,55	
EF	34,57	233 29 10	E	+ 65 429,71	+ 29 255,09	
FG	20,52	236 18 50	F	+ 65 401,92	+ 29 234,51	
GH	47,19	241 57 10	G	+ 65 384,85	+ 29 223,13	
HJ	33,74	244 54 30	H	+ 65 343,20	+ 29 200,94	
JK	34,59	252 33 50	J	+ 65 312,64	+ 29 186,63	
KL	35,61	256 55 00	K	+ 65 279,65	+ 29 176,27	
LM	27,16	257 00 00	L	+ 65 244,96	+ 29 168,21	
MN	59,77	264 26 50	M	+ 65 218,50	+ 29 162,10	
NP	33,66	267 37 50	N	+ 65 159,02	+ 29 156,32	
PQ	10,90	264 03 50	P	+ 65 125,39	+ 29 154,93	
QR	54,12	271 18 50	Q	+ 65 114,55	+ 29 153,80	
RS	89,16	272 15 20	R	+ 65 060,44	+ 29 155,04	
ST	121,67	271 05 40	S	+ 64 971,35	+ 29 158,55	
TU	29,85	263 44 30	T	+ 64 849,71	+ 29 160,87	
UV	30,00	261 53 20	U	+ 64 820,04	+ 29 157,62	
VW	64,23	261 56 00	V	+ 64 790,34	+ 29 153,38	
WX	47,87	258 22 40	W	+ 64 726,74	+ 29 144,37	
XY	71,75	257 58 10	X	+ 64 679,86	+ 29 134,73	
YZ	79,27	258 40 30	Y	+ 64 609,69	+ 29 119,77	
ZA1	167,74	257 45 50	Z	+ 64 531,96	+ 29 104,21	
A1B1	101,06	294 27 10	A1	+ 64 368,04	+ 29 068,66	
B1C1	15,23	266 33 20	B1	+ 64 276,05	+ 29 110,49	
C1D1	52,63	271 22 40	C1	+ 64 260,85	+ 29 109,58	
D1E1	141,79	226 07 10	D1	+ 64 208,24	+ 29 110,84	
			E1	+ 64 106,04	+ 29 012,56	
F1B	4,44	305 13 30	F1	+ 65 675,44	+ 29 467,52	
D1G1	57,09	226 07 10	G1	+ 64 167,09	+ 29 071,27	
		101/2930	△	+ 65 221,22	+ 27 769,69	
		123/2930	△	+ 52 266,66	+ 25 022,77	
<p>The line F1 B C D E F G H J K L M N P Q R S T U V W X Y Z A1 B1 C1 D1 G1 extending 5 metres north and 3 metres south of the line represents a Pipeline Servitude 8,00 metres wide over <b>PORTION 5 OF THE FARM CRAIGIE BURN No 18026</b></p> <p>Situate in the Mpofana Local Municipality Registration Division FT and Province of KwaZulu-Natal Surveyed in October and December 2017, May and June 2018 by me</p> <p style="text-align: right;"><i>M. B. Kitshoff</i> <b>M. B. Kitshoff PLS0896</b> Professional Land Surveyor</p>						
This diagram relates to No.		The original diagram is S.G. No. 98/2007			File No. 18026	
Registrar of Deeds		Transfer No. 43054/2007			S.R. No. 154/2020	
					Comp. FU-5A-4B,D	

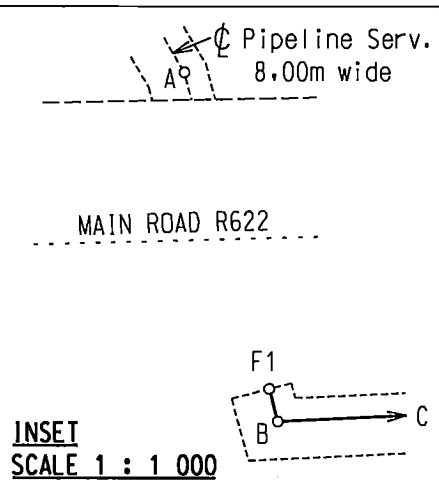
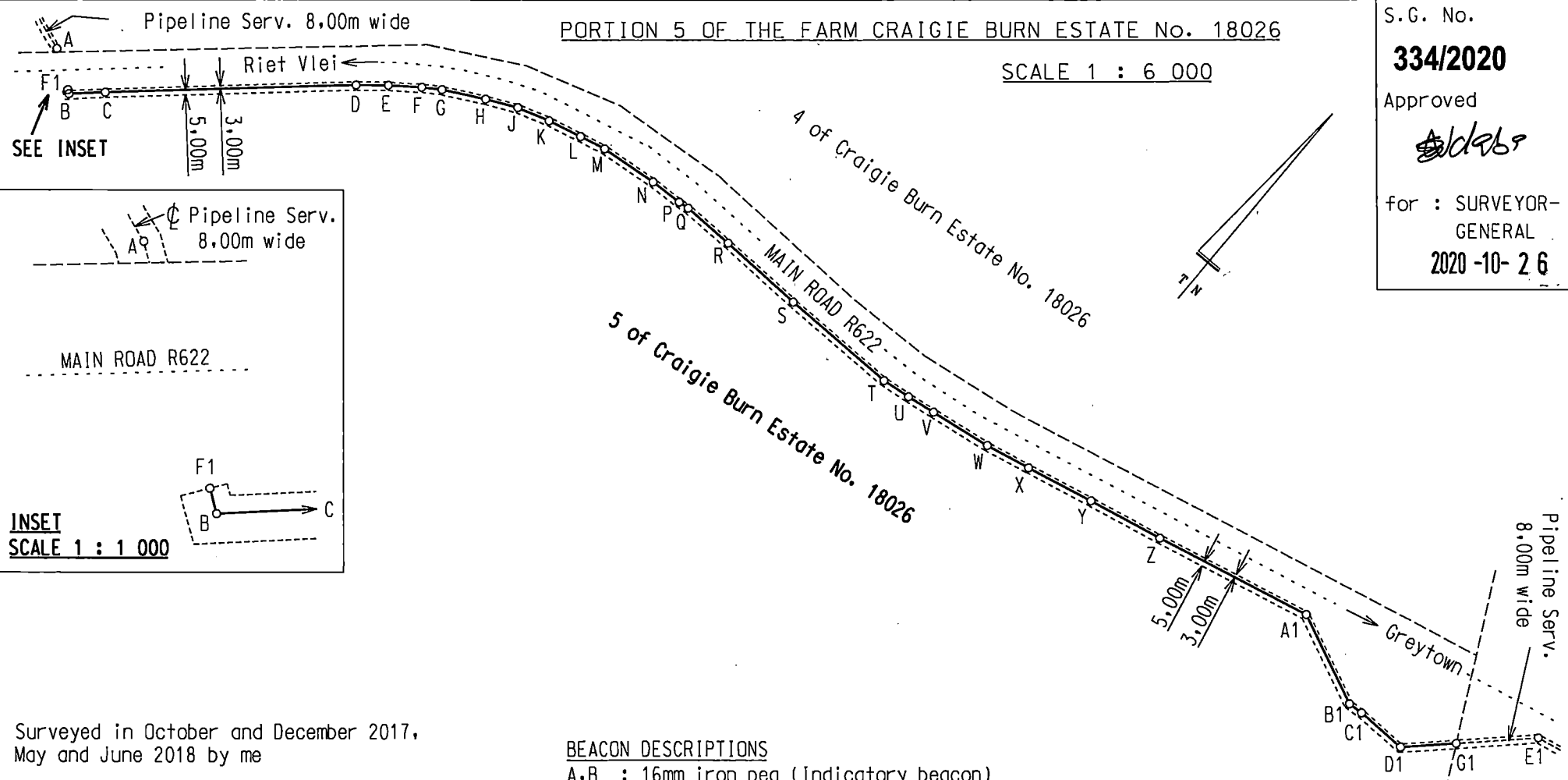
PORTION 5 OF THE FARM CRAIGIE BURN ESTATE No. 18026

SCALE 1 : 6 000

S.G. No.  
**334/2020**

Approved  
*[Signature]*

for : SURVEYOR-  
GENERAL  
2020-10-26



Surveyed in October and December 2017,  
May and June 2018 by me

*[Signature]*

**M.B. Kitshoff** PLS0896  
Professional Land Surveyor

- BEACON DESCRIPTIONS**  
 A,B : 16mm iron peg (Indicatory beacon)  
 C,D,E,F,G,H,J,K,L,M,N,P,Q,R,S,T,U,V,  
 W,X,Y,Z,A1,B1,C1,D1,E1 : 16mm iron peg  
 F1,G1 : No beacon

Rem of  
17 (of 2) of  
Alida Mount  
No. 1347

NBERG11/SUB DGMS

BUTTON & O'CONNOR INC. : Westville

SIDES Metres	ANGLES OF DIRECTION	CO-ORDINATES			S.G. No.  98/2007
		Y	System	Wg 31° X	
	Constants	+	0,00	+3200 000,00	Approved  <i>Samuel</i> for Surveyor- General  2007-03-27
AB	289,90	A	+ 64 208,85	+ 28 989,20	
BC	181,55	B	+ 64 077,37	+ 29 247,57	ACT 70 OF 1970 NO. 41140 42132
CD	91,59	C	+ 64 228,31	+ 29 348,45	
DE	130,05	D	+ 64 177,11	+ 29 424,39	05
EF	92,92	E	+ 64 127,40	+ 29 544,57	
FG	33,87	F	+ 64 038,97	+ 29 573,08	530 302
GH	61,28	G	+ 64 050,17	+ 29 605,03	
HJ	148,56	H	+ 64 102,73	+ 29 573,51	PM 2007-08-13
JK	249,33	J	+ 64 190,66	+ 29 693,26	
KL	289,92	K	+ 64 436,21	+ 29 649,96	2009.01.27 2009.01.27
LM	26,93	L	+ 64 422,08	+ 29 939,54	
MN	526,25	M	+ 64 432,91	+ 29 964,20	101/2930 474/2930
NP	846,49	N	+ 64 948,82	+ 30 067,97	
PQ	713,01	P	+ 65 791,72	+ 29 990,03	▲ + 65 221,22 + 27 769,69 ▲ + 67 479,40 + 33 214,82
QR	122,92 <sup>97</sup>	Q	+ 66 504,05	+ 29 958,75	
RS	390,39	R	+ 66 512,2 <sup>5</sup>	+ 29 836,11	
ST	195,23	S	+ 66 139,82	+ 29 719,00	
TU	96,63	T	+ 65 957,83	+ 29 648,35	
UV	601,42	U	+ 65 878,08	+ 29 593,77	
WV	103,98	V	+ 65 425,52	+ 29 197,66	
WX	104,02	W	+ 65 334,02	+ 29 148,26	
XY	122,43	X	+ 65 234,47	+ 29 118,12	
YZ	190,11	Y	+ 65 112,39	+ 29 108,82	
ZA1	89,22	Z	+ 64 922,44	+ 29 116,73	
A1B1	106,30	A1	+ 64 833,24	+ 29 115,05	
B1A	530,89	B1	+ 64 727,96	+ 29 100,42	

The figure A B C D E F G H J K L M N P Q R S T U V W X Y Z A1 B1  
represents 153,4464 Hectares of land being

PORTION 5 OF THE FARM CRAIGIE BURN ESTATE NO.18026

Situate in the Mooi Mpfana Municipality, Registration Division FT,  
Province of KwaZulu-Natal.

Surveyed in November and December 2006  
by me

*W.I.M. Turnbull*  
W.I.M. TURNBULL  
Professional Land Surveyor

Registration No. PLS 0875

This diagram  
relates to  
No. *DTT 43054/2007*  
Registrar of Deeds

The original diagram is  
S.G. No. 93/2007  
Transfer  
No.

File No. 18026  
S.R. No. 34/2007  
Comp. FTNM  
FTNG-34  
43

**S**

NBERG11/SUB DGMS  
BUTTON & O'CONNOR INC. : Westville

Description of Beacons

- A, S, T, U, V, W, X, Y, Z,
- A1, B1 : 16mm Iron Peg next to Iron Standard
- B, C, D, K, L : 20mm Iron Peg and Cairn
- E, F, G, H, M, N, P, Q, R : 16mm Iron Peg and Cairn
- J : 16mm Iron Peg

S.G. No.

98/2007

Approved

*David*

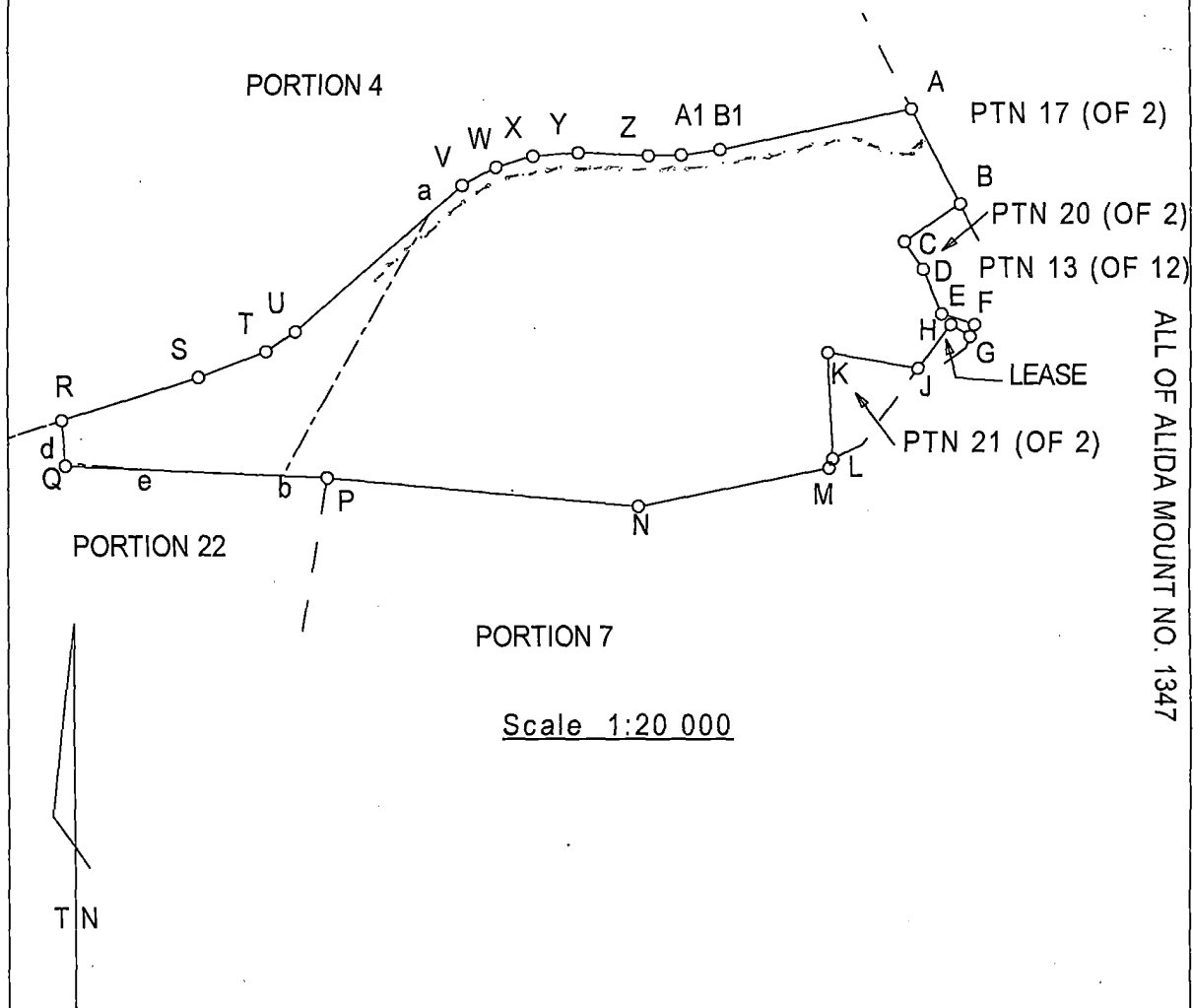
for Surveyor-General

2007-03-27

ACT 70 OF 1970  
NO. 41140  
42137

PM 2007-08-13

PORTION 5 OF THE FARM CRAIGIE BURN ESTATE NO.18026



ALL OF ALIDA MOUNT NO. 1347

Surveyed in November and December 2006  
by me

Registration No. PLS 0875

*W.I.M. Turnbull*  
W.I.M. TURNBULL  
Professional Land Surveyor



## **Provisional Endorsements / Notes**

**SG. 98/2007**

**Scanned page number** \_\_\_\_\_

**Designation:PTN 5 O.T.F. CRAIGIE BURN ESTATE NO 18026**

**Reservation:**

- 1. VIDE SERV.  
SG NO 334/2020  
SR NO 154/2020**