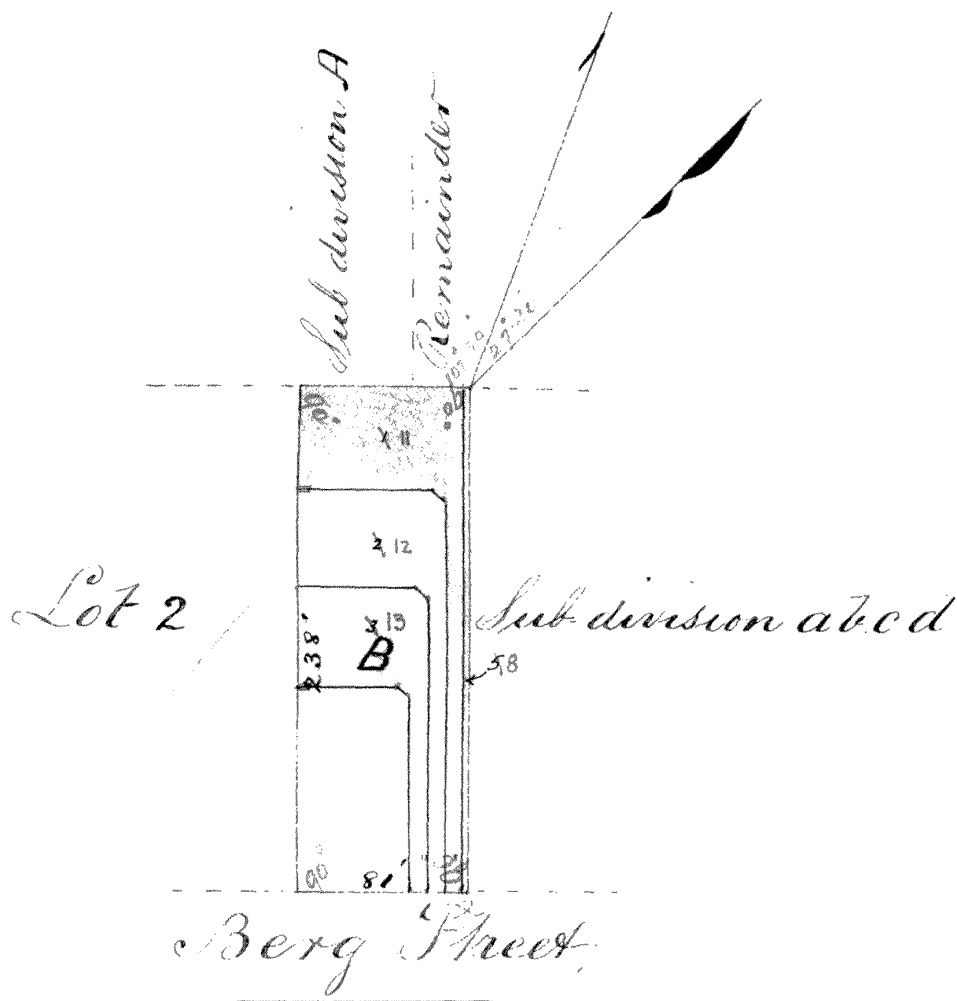


Out copy

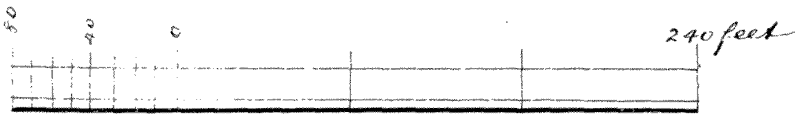
St. Jan. 1897
Sep 1897

D.G.U.
Sub. Vol. 32 fol. 73

211/47
Mto



21502
2100/1000



Reg. Div.
FT

Scale of Feet

Now SUB... 5...
LOT... 2203...
PIETERMARITZBURG

Now known as

~~Sub B of Lot 3 Berg Street~~

sh. L.
20/12/43

The above Diagram represents a piece of land in extent ~~1~~ Acres

1 Roods, 30-809 Perches, situate in the City of Pietermaritzburg,
Colony of Natal. Bounded N.E. by Sub-division a b c d S.W. by

Lot 2 S.E. by Berg St. N.W. by ^{Sub-division A} Remainder being a
subdivision of Lot No. 3 Berg Street, on the General
plan of that City. T689/1897

Surveyed by me,

14245

April 1897

George Wolgate

