

S.G. No. 1137/1994

SHEET 1 OF 5 SHEETS

APPROVED

DECLARED AN APPROVED PRIVATE TOWNSHIP IN TERMS OF SECTION 13 OF THE TOWNSHIP ACT, 1947 AND SECTION 13(1) OF THE TOWNSHIP ACT, 1947.

APPROVAL DATE: 15.09.94

FOR: SURVEY GENERAL 27-6-1994

GENERAL PLAN

(COMPRISING 5 SHEETS NUMBERED 1-5)

PRINCE'S GRANT

COMPRISING 333 LOTS NUMBERED 1-333

SITUATE ON THE REMAINDER OF THE FARM HYDE PARK No. 10233

VIDE DIAGRAM SUB VOL 561 FOL 57 AND CERTIFICATE OF CONSOLIDATED TITLE No. 2938/1923

SITUATE IN THE ADMINISTRATIVE DISTRICT AND PROVINCE OF NANTAL

Surveyed in September-December 1993 and January-March 1994 by me

R. N. BOOTHE Professional Land Surveyor

SERVITUDE NOTES

A Lot 199 is subject to a Right of Way Servitude 8.00 metres wide as shown

D Lot 331 is subject to a Reservoir Servitude as shown

BEACON DESCRIPTIONS

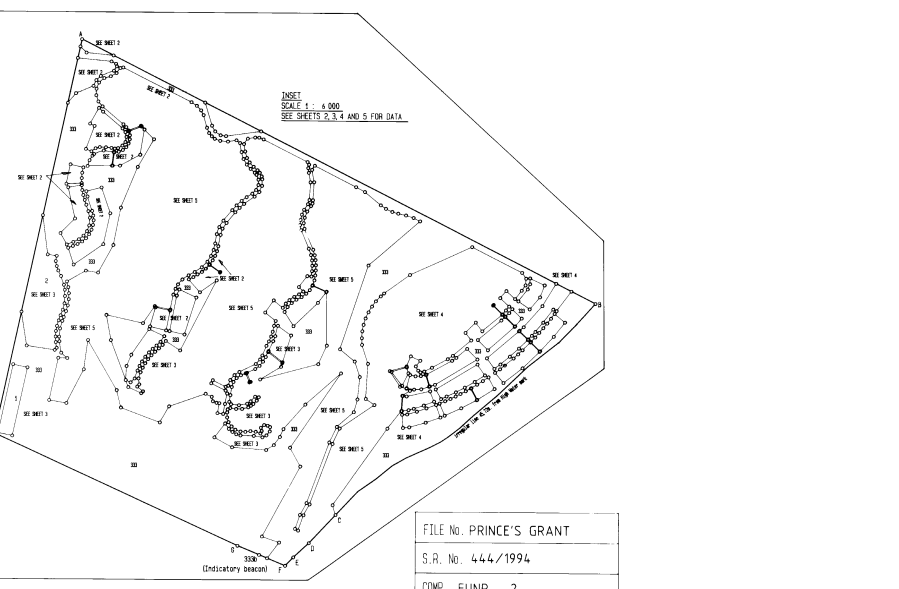
A 50mm iron pipe at base of Indoni Tree.

All other beacons are 20mm iron pipes.

NO BEACON: G.10, 294, 295C, 611, 297C, 299B, 612, 626, 301B, 302B, 303A, 613, 304A, 306A, 307, 614, 615, 308C, 310B, 627, 616, 312B, 313B, 618, 314, 316A, 619, 617, 317C, 319B, 619, 321B, 322B, 620, 621, 199A, 199A, 199A.

REFERENCE BEACONS: RM1, RM2, RM3 - 12mm iron peg in concrete. RM4, RM5, RM6, RM8, RM9 - 20mm iron peg in concrete. RM10 - 16mm iron peg in concrete.

Table with columns: DATA BLOCK, CO-ORDINATES, AREAS, and LOT. It contains a grid of coordinate data for 333 lots, including lot numbers, areas, and coordinates in various units.



FILE NO. PRINCE'S GRANT

S.R. No. 444/1994

COMP. PLAN - 2

1137/1994

SHEET 1

S

TAMMONT, HOLLER, PRESS & PARTNERS  
31 of 81 of  
Hyde Park  
No. 10233

*Notes: 3 heard  
R. H. 10/10/94  
M. F. 3/77*  
Rem of 8 of Hyde Park No. 10233

S.G. No. 1137/1994  
SHEET 2 OF 5 SHEETS  
APPROVED  
*W. G. 1994*  
FOR: SANYA-GEMAL 27-6-1994

GENERAL PLAN  
(COMPRISING 5 SHEETS NUMBERED 1-5)  
OF  
PRINCE'S GRANT  
SITUATE IN THE  
ADMINISTRATIVE DISTRICT AND  
PROVINCE OF NATAL  
SCALE 1 : 1 000

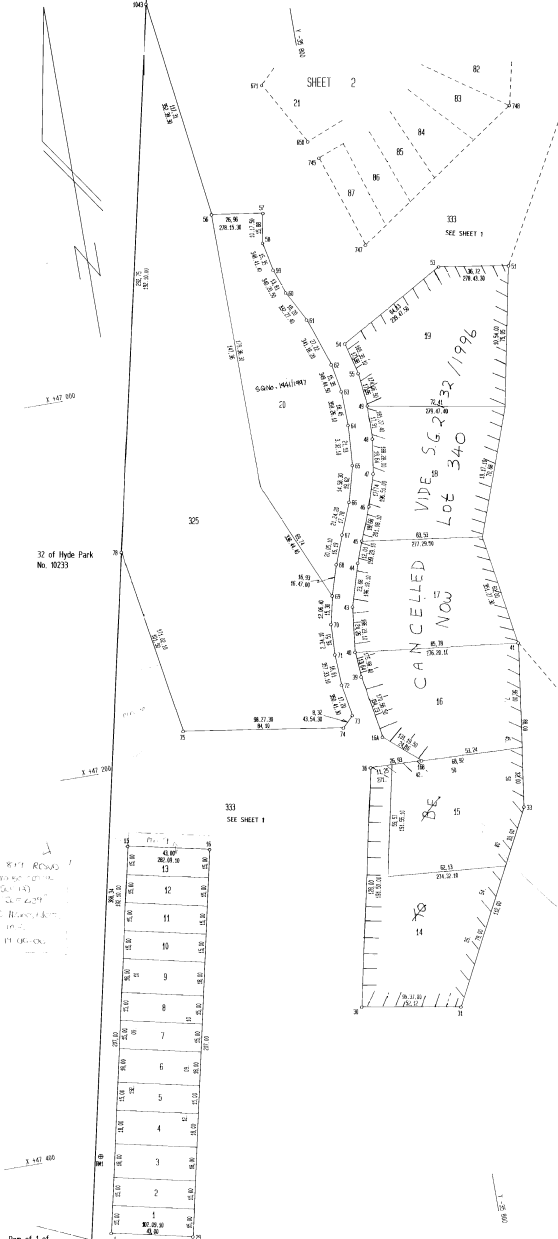
Surveyed in September-December 1993 and  
January-March 1994 by me  
*R. A. BOOTE*  
Professional Land Surveyor



S

FILE No. PRINCE'S GRANT  
S.R. No. 444/1994  
COMP. FUNR - 2

TARRANTON, HOLDER, ROSS & PARTNERS



Plans kept ready for issue on application for a copy of the plans to be made available to the public.

Form of 1 of 8th Date No. 1380

**GENERAL PLAN**  
 (COMPRISING 5 SHEETS NUMBERED 1-5)  
 OF  
**PRINCE'S GRANT**  
 SITUATE IN THE  
 ADMINISTRATIVE DISTRICT AND  
 PROVINCE OF NATAL  
 SCALE 1 : 1 000

Surveyed in September-October 1933 and  
 January-March 1934 by me  
*B. N. B. B. B.*  
 B. N. B. B. B.  
 PROFESSIONAL LAND SURVEYOR



S.G. No. 1137/1994  
 SHEET 3 OF 5 SHEETS  
 APPROVED  
*[Signature]*  
 F.M. : SHRYVER-GENERAL 27-6-1934

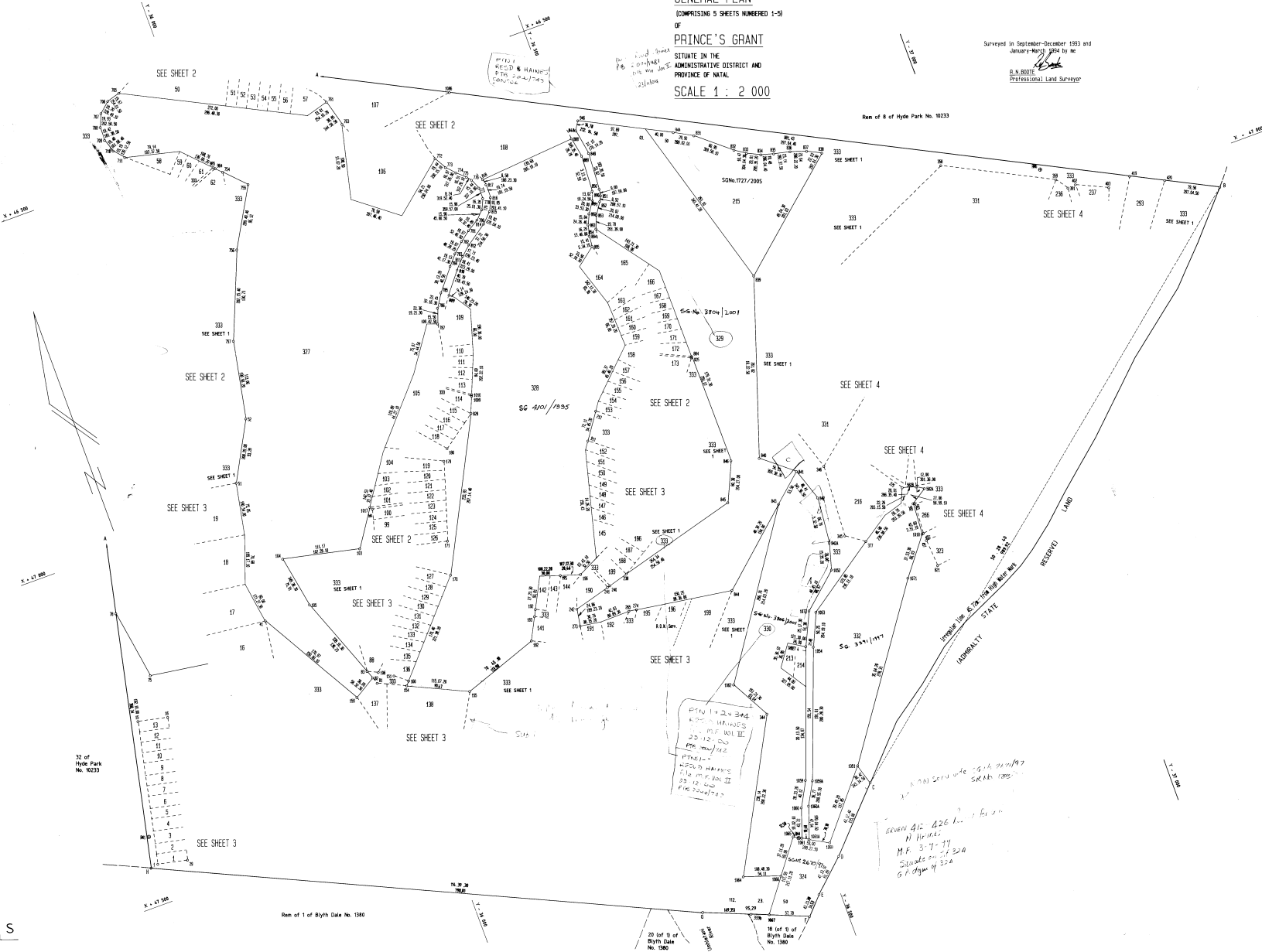
FILE NO. PRINCE'S GRANT  
 S.R. No. 444/1994  
 COMP. FUNR - 2



GENERAL PLAN  
 COMPRISING 5 SHEETS NUMBERED 1-5  
 OF  
**PRINCE'S GRANT**  
 SITUATE IN THE  
 ADMINISTRATIVE DISTRICT AND  
 PROVINCE OF NATAL  
 SCALE 1 : 2 000

Surveyed in September-December 1893 and  
 January-March 1894 by me  
 B. N. BOOTH  
 Professional Land Surveyor

S.G. No. 1137/1994
SHEET 5 OF 5 SHEETS
APPROVED
<i>B. N. Booth</i>
FOR: SURVEYOR-GENERAL 27-6-1994



ESTABLISHED	Pat. No.
By Order	531 No.
COEFF. C.D.D.E	6/1894
1-1	644/1894

FILE No. PRINCE'S GRANT
S.R. No. 444/1994
COMP. FUNR - 2